



GAT MONTHLY MEMBERSHIP PROGRESS REPORT

Results as of: 2/28/2022

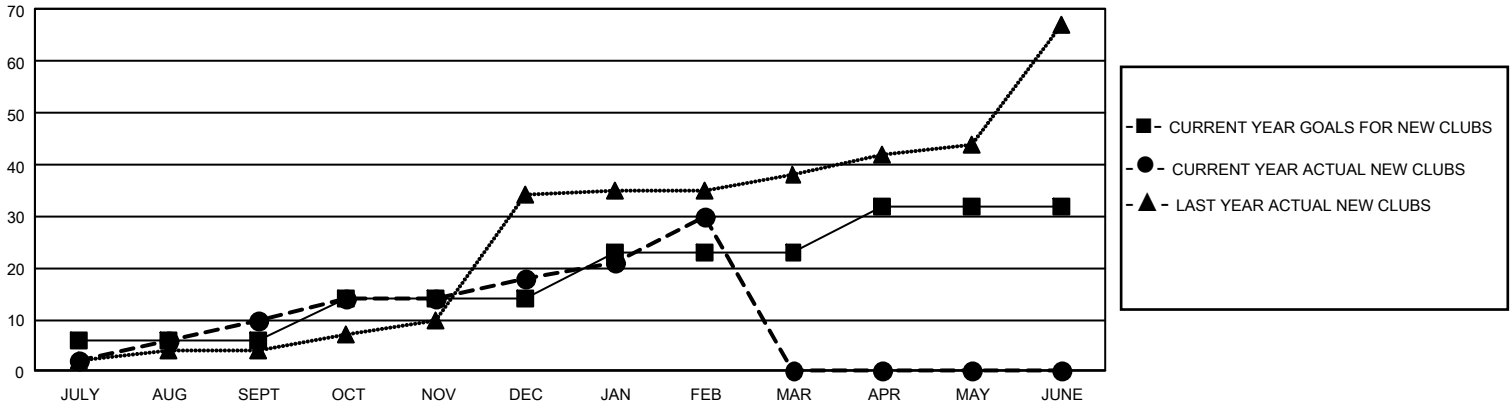
GMT Constitutional Area 5 - E, Group O

REPORT DOES NOT INCLUDE CLUBS IN UNDISTRICTED AREAS.

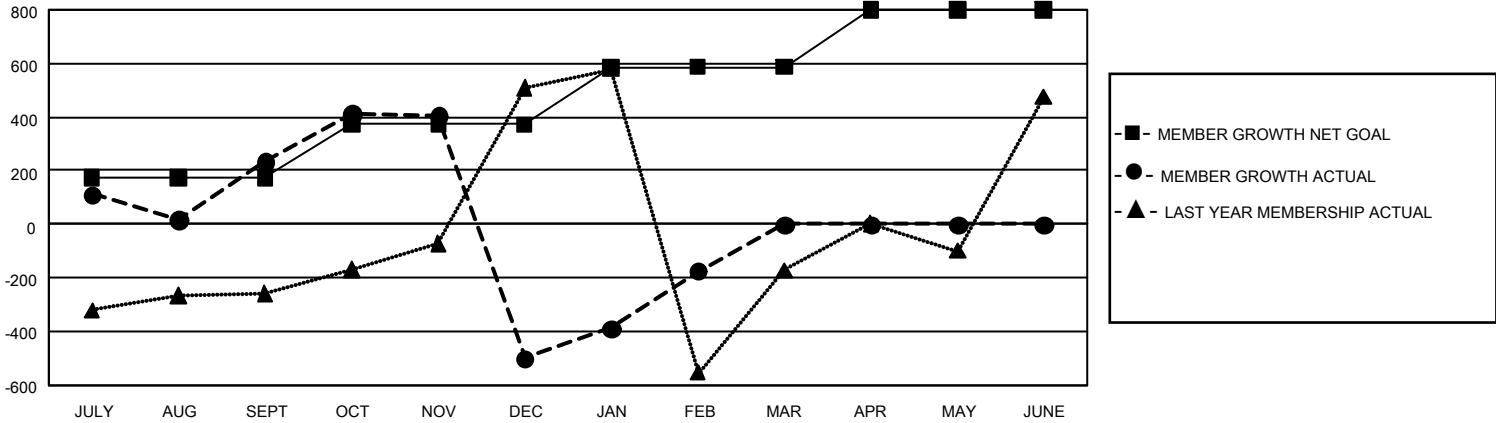
Clubs			
RESULTS FOR 2021-2022			
QUARTER	NEW CLUB GOAL	NEW CLUBS	DROPPED CLUBS
JULY/AUG/SEPT	18	10	16
OCT/NOV/DEC	24	8	37
JAN/FEB/MAR	27	12	6
APR/MAY/JUNE	27	0	0

Members			
RESULTS FOR 2021-2022			
QUARTER	MEMBER GROWTH NET GOAL	MEMBER GROWTH ACTUAL	DROPPED MEMBERS ACTUAL (including transfers)
JULY/AUG/SEPT	172	897	627
OCT/NOV/DEC	200	780	1,475
JAN/FEB/MAR	215	838	399
APR/MAY/JUNE	212	0	0

GOALS AND ACTUAL NEW CLUBS CUMULATIVE



GOALS AND ACTUAL MEMBERS CUMULATIVE



DROPPED CLUBS: 59	261 CLUBS OF 534 ADDED 1 OR MORE NEW MEMBERS	GENDER DISTRIBUTION	
		MALE 8,292 (48.99%) FEMALE 8,633 (51.00%) NON BINARY 0 (0.00%) PREFER NOT TO ANSWER 1 (0.01%)	
DROPPED MEMBERS		CLICK HERE FOR CUMULATIVE MEMBERSHIP DATA	TOTAL FAMILY UNIT MEMBERS 6,662
DECEASED 97 CLUB CANCELLED 1,261 OTHER 1,157 TOTAL 2,515	FAMILY MEMBERS PAYING HALF DUES 4,173		